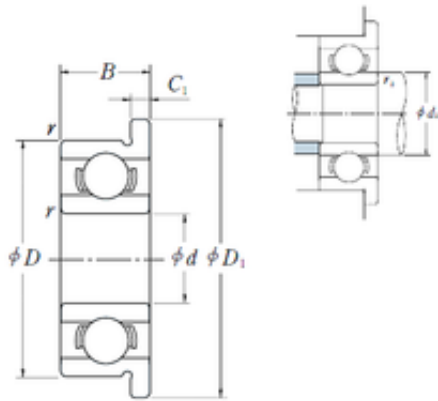




Bearing?Power Machinery Co., Ltd.

ISO FR1-5 deep groove ball bearings



Bearing No. FR1-5

Size	2.38x7.938x2.779 mm
Bore Diameter	2,38 mm
Outer Diameter	7,938 mm
Width	2,779 mm
d	2,38 mm
D	7,938 mm
D1	9,119 mm
B	2,779 mm
C	2,779 mm
r min.	0,15 mm
C1	0,58 mm

FR1-5 Bearing 2D drawings and 3D CAD models